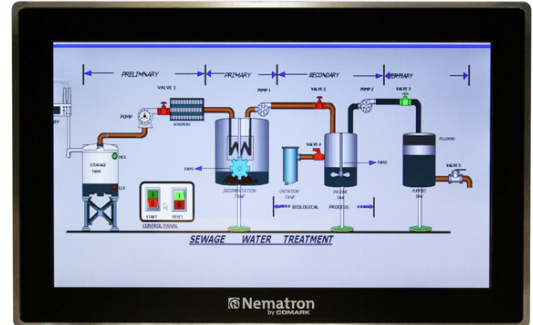


Industrial Panel-Mount Display Family

The Comark Industrial Panel-Mount Display Family can take the heat - literally. This fanless display family can operate up to 60° C/140°F and offers a range of large (15.6"-24") anti-glare P-CAP multi-touch screens. Certified to meet UL and cUL Class 1, Division 2 hazardous area standards, this panel computer is encased in an impact resistant aluminum or stainless steel housing. All Comark displays can be further customized to meet specific industry or technical needs.



TECHNICAL SPECIFICATIONS

DISPLAY				
Display Size	15.6"	18.5"	21.5"	24"
NITs	350-nit	300-nit	250-nit	250-nit
Resolution	1920 x 1080			
Touchscreen	Projected capacitive (P-CAP) multi-touch screen			

PHYSICAL	
Dimensions	15.6" 10.13" x 16.03" x 2.90" (257.3mm x 407.2mm x 73.7mm)
	18.5" 11.51" x 18.51" x 2.90" (292.4mm x 470.2mm x 73.7mm)
	21.5" 13.06" x 21.22" x 2.90" (331.7mm x 539.0mm x 73.7mm)
	24" 14.30" x 23.45" x 2.90" (363.2mm x 595.6mm x 73.7mm)
Weight	15.6" 15.0 lbs (6.80kg)
	18.5" 19.0 lbs (8.6kg)
	21.5" 19.5 lbs (8.9kg)
	24" 22.0 lbs (10.0kg)
Casing	Impact resistant aluminum or stainless steel
VESA Mounting	100mm x 100mm
Mounting Depth	2.6" (66.0mm)
Cutout Dimensions	15.6" - 8.55" x 14.75" (224.8mm x 374.7mm)
	18.5" - 10.32" x 17.32" (262.1mm x 439.9mm)
	21.5" - 11.97" x 20.03" (301.5mm x 508.8mm)
	24" - 13.10" x 22.25" (332.7mm x 565.2mm)
Operating Temperature	0°C to 60°C (32°F to 140°F)
Included Accessories	Video / touch cables
Power	DC/AC
Fan or Fanless Cooling	Fanless
Key Variants	AC, DC, stainless bezel
Ports, Slots & Peripherals	USB touch input

DOCUMENTATION	
Certification and Ratings	FCC / CE/UL61010 / C1D2 IP66 front panel only when mounted, Nema 4/4x when mounted, 4x requires stainless steel bezel
Warranty	2 years

Looking for different specifications to meet your application needs? We are specialists in custom engineered solutions. [Contact us to learn more.](#)

