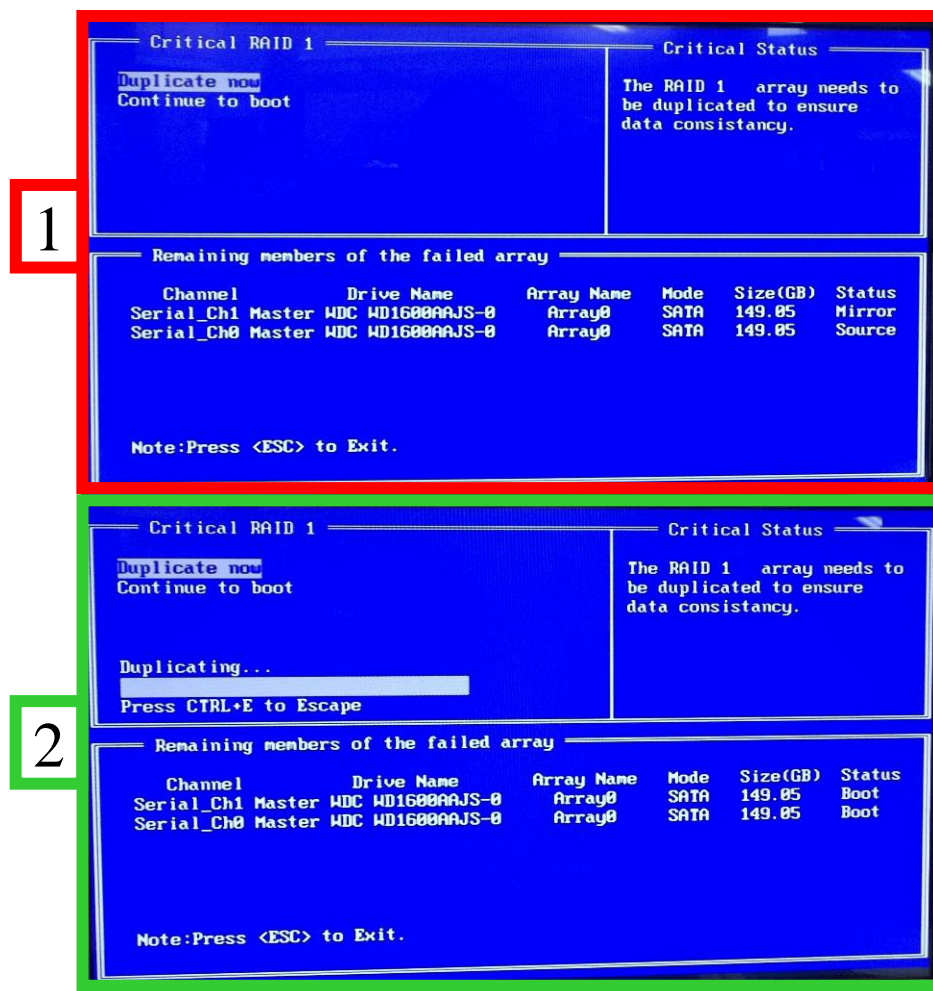


REV	DESCRIPTION	DRAWN	CHECKED	APPROVED	DATE
A	Release ECO#008009	P. Fricault	J. Brault	P. Dwyer	2/12/13

Rebuilding RAID on systems with RAID card 63-11468-001

If this screen happens:

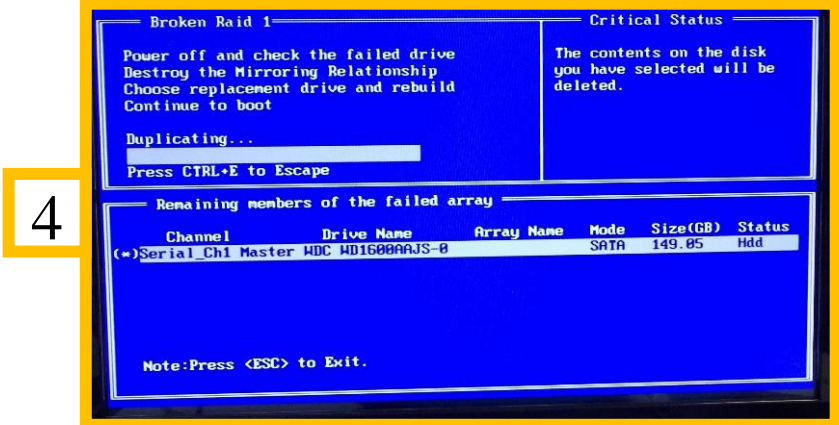
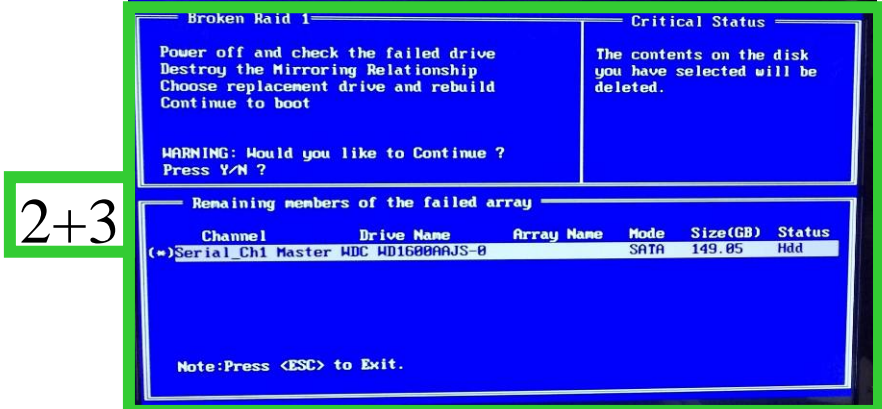
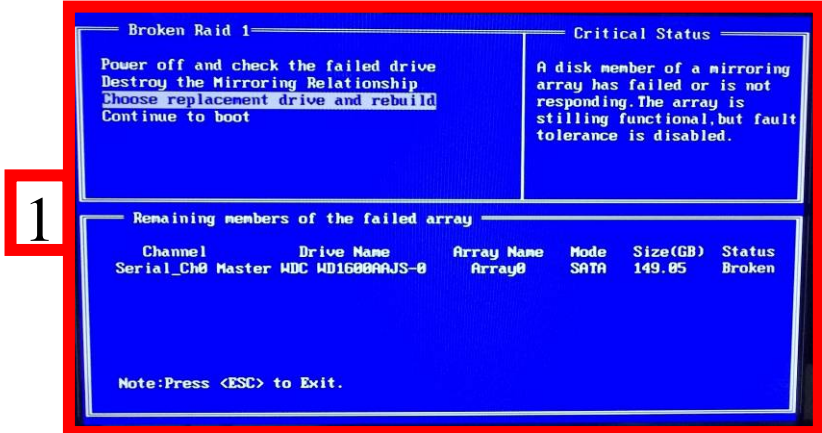
1. Choose Duplicate now.
2. Wait till the process is done and the RAID has been repaired.



TYPE	DESCRIPTION	PART #	COMARK CORPORATION COMPANY CONFIDENTIAL	PAGE
MFG PROCEDURE	PROC, REBUILDING RAID FOR 11468 RAID CARD	08-11468-002-A.Doc		1 of 4

If this screen happens:

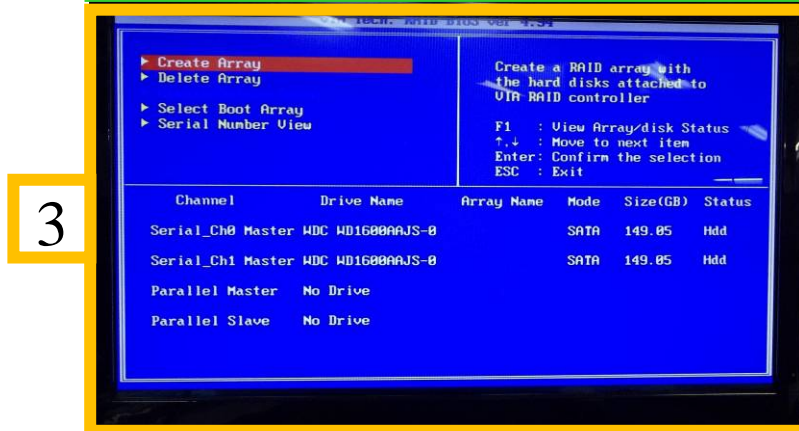
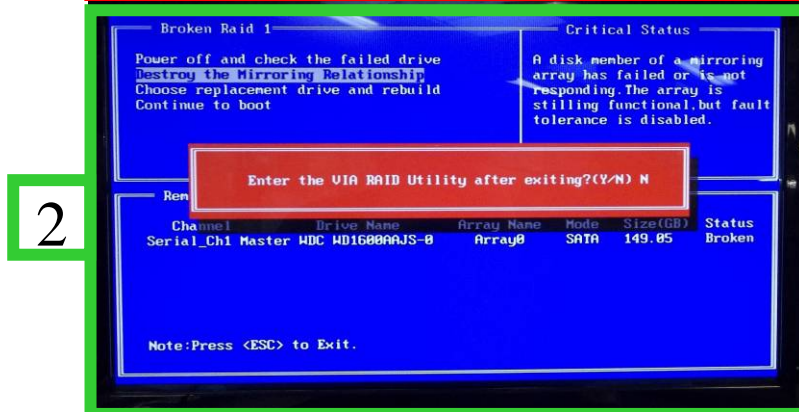
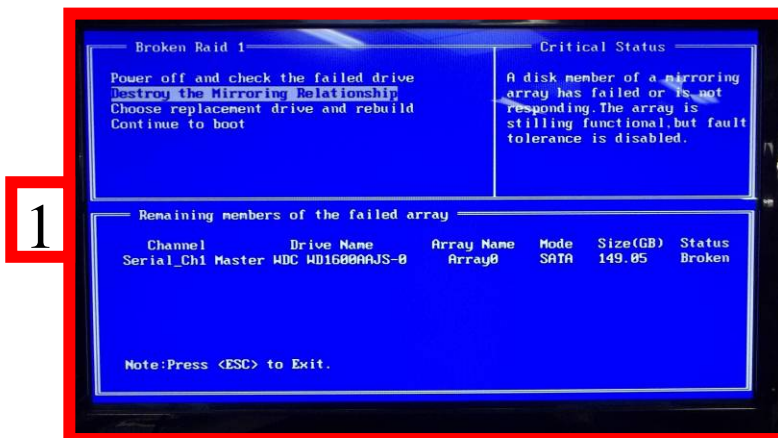
1. Choose Replacement Drive and Rebuild
2. Press enter to select the new drive
3. Then press “Y” to begin the rebuild process
4. Wait till the process is done and the RAID has been repaired.



TYPE	DESCRIPTION	PART #	COMARK CORPORATION	PAGE
MFG PROCEDURE	PROC, REBUILDING RAID FOR 11468 RAID CARD	08-11468-002-A.Doc	COMPANY CONFIDENTIAL	2 of 4

The other option when this screen appears

1. Choose Destroy the Mirroring Relationship
2. Press “Y” to enter VIA RAID Utility
3. Choose Create Array



TYPE	DESCRIPTION	PART #	COMARK CORPORATION COMPANY CONFIDENTIAL	PAGE
MFG PROCEDURE	PROC, REBUILDING RAID FOR 11468 RAID CARD	08-11468-002-A.Doc		3 of 4

4. Choose Select Disk Drives. Press Enter twice to select the drives
5. Choose Start Create Process. Press Y to start copying data from source to mirror
6. When done message will show up saying Create New RAID Success. Hit "ESC" twice to exit and restart the system.

4

Channel	Drive Name	Array Name	Mode	Size(GB)	Status
Serial_Ch0	Master WDC WD1600AAJS-0		SATA	149.05	Hdd
Serial_Ch1	Master WDC WD1600AAJS-0		SATA	149.05	Hdd
Parallel Master	No Drive				
Parallel Slave	No Drive				

5

Channel	Drive Name	Array Name	Mode	Size(GB)	Status
Serial_Ch0	Master WDC WD1600AAJS-0		SATA	149.05	Source
Serial_Ch1	Master WDC WD1600AAJS-0		SATA	149.05	Mirror
Parallel Master	No Drive				
Parallel Slave	No Drive				

6

Channel	Drive Name	Array Name	Mode	Size(GB)	Status
Serial_Ch0	Master WDC WD1600AAJS-0	ARRAY 0	SATA	149.05	Source
Serial_Ch1	Master WDC WD1600AAJS-0	ARRAY 0	SATA	149.05	Mirror
Parallel Master	No Drive				
Parallel Slave	No Drive				

TYPE	DESCRIPTION	PART #	COMARK CORPORATION	PAGE
MFG PROCEDURE	PROC, REBUILDING RAID FOR 11468 RAID CARD	08-11468-002-A.Doc	COMPANY CONFIDENTIAL	4 of 4