

MissionVue™ MV150 15.0" Military Display/Computer

15" LED LCD Panel

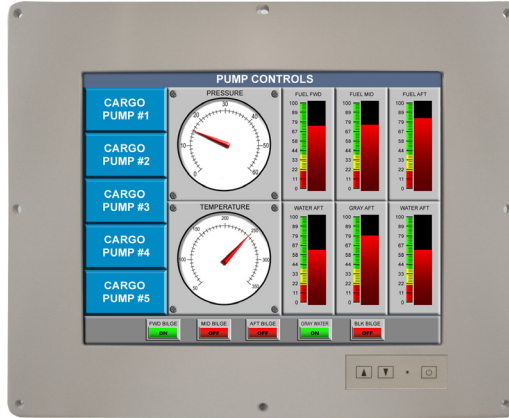
Intel Core i5 @2.5GHz

Sealed to IP65 / Fanless Operation

Panel or Bulkhead Mount

Touchscreen Options

Fully MIL Qualified



DS MV150PC, Rev A

Technical Specifications

Display

Resolution	1024 x 768
Brightness	400 cd/m ² (NIT)
Viewing Angle	±80° Horizontal / ±70° Vertical
Touchscreen	IR (Resistive Option Available)
Colors	16.7 Million
Contrast ratio	700:1 (Typical)

Processor

Type & Processor	Intel Core i5
CPU	2.5 GHz

Storage & Peripherals

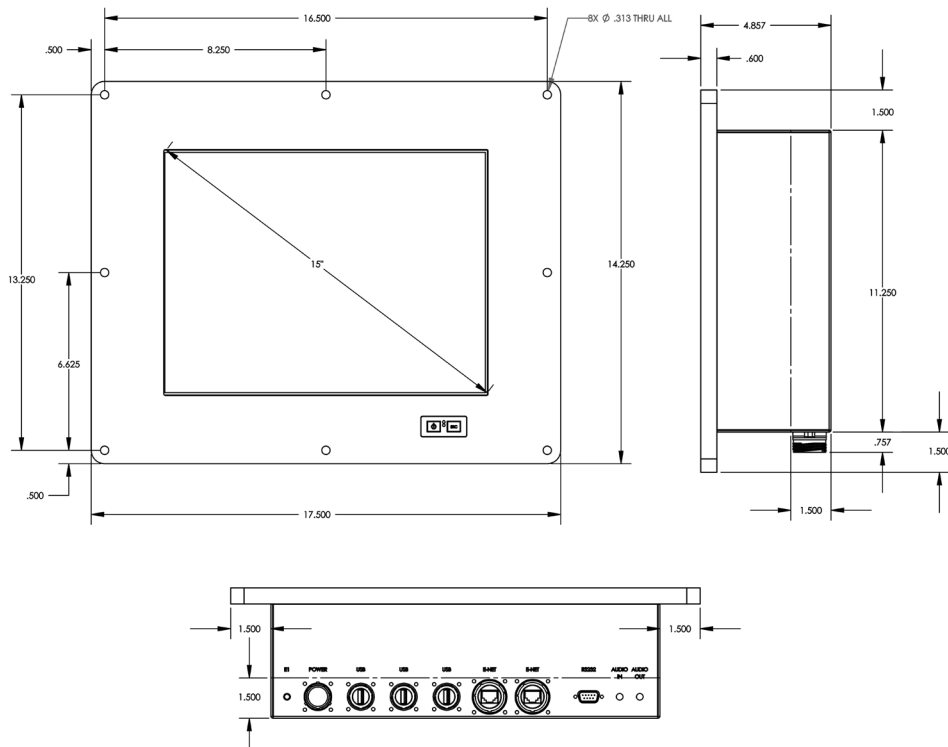
RAM	4GB (expandable to 8GB)
Storage	Solid State Drive
Operating System	Windows 7
Power	MIL Circular
USB	USB 2.0 (3)
Ethernet	Gigabit (2)
Serial	RS232
Audio	IN / OUT

Power

Voltage, Standard	18-36VDC or 85-264VAC 50/60Hz
Power Consumption	75 Watts MAX

Dimensional Drawing

Dimensions subject to change



Physical	
Dimensions (inch)	17.5"W x 14.25"H x 4.8"D
Dimensions (mm)	444W x 362H x 122D
Weight	25 lbs.
Material	6061 Machined Bezel – 5052 Aluminum Frame
Color	FED-STD-595 Gray
Mounting	Panel Mount or Bulkhead Adaptor
Enclosure	IP65 Full
Controls	Front Panel OSD Power / LED Indicator / Brightness

Environmental	
Temp, Operating	-20°C to 60°C per MIL-STD-810G, Methods 501.5 & 502.5
Temp, Storage	-40°C to 70°C per MIL-STD-810G, Methods 501.5 & 502.5
Humidity	95% per MIL-STD-810G, Method 507.5
Salt Fog	MIL-STD-810G Method 509.5 Procedure I
Vibration	MIL-STD-167-1A Shipboard
Shock	MIL-S-901D Grade A
EMI	MIL-STD-461E

Options	
Colors	Custom – Requires Specification
Cables	6' Standard – Custom Lengths Available
Touchscreen	Resistive or P-Cap Available
Fiber	Full Duplex Fiber
Mounting	Bulkhead Interface Bracket