

## MissionVue™ MV190D 19" Military Display

19" LED LCD Panel

1280 x 1024 Resolution

Sealed to IP65 / Fanless  
Operation

Panel or Rack Mount

Fully Configurable I/O Panel

Touchscreen Options

Fully MIL Qualified



DS MV190D, Rev A

### Technical Specifications

#### Display

Resolution	1280 x 1024
Brightness	350 cd/m <sup>2</sup> (NIT)
Viewing Angle	±85° Horizontal / ±80° Vertical
Touchscreen	Touchscreen Options Available
Colors	16.7 Million
Contrast ratio	800:1 (Typical)

#### Power

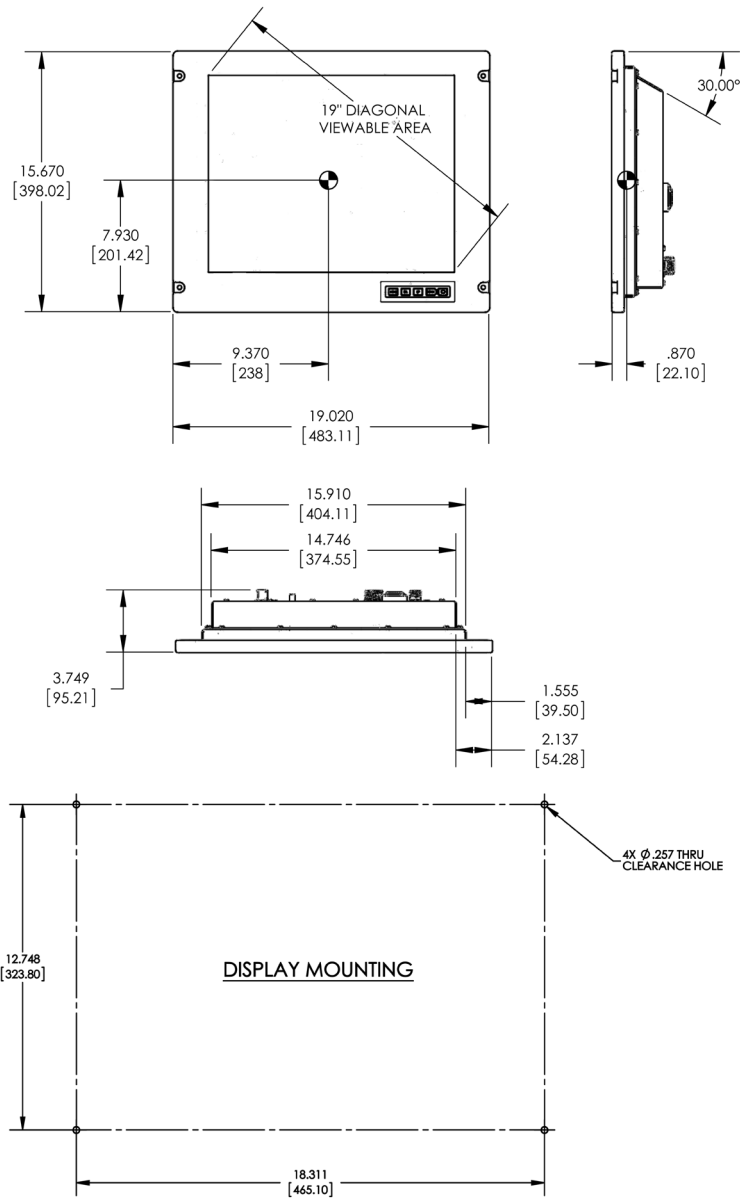
Voltage, Standard	18-36VDC or 85-264VAC 50/60Hz
Power Consumption	45 Watts MAX

#### Connectors

I/O Plate	Fully Configurable Connector Type & I/O
Power	MIL Circular
Video	DVI & HDMI In

#### Environment

Temp, Operating	0°C to 55°C per MIL-STD-810F, Method 501.4
Temp, Storage	-20°C to 60°C per MIL-STD-810G, Methods 501.4
Humidity	95% per MIL-STD-810F, Method 507.4
Drip	MIL-STD-810F, Method 506.4 Rain, Procedure III Drip
Vibration	MIL-STD-167-1A Shipboard
Shock	MIL-S-901D Grade A
EMI	MIL-STD-461F, Surface Ship Below Deck



## Physical

Dimensions (inch)	19.0"W x 15.7"H x 3.7"D	
Dimensions (mm)	483W x 399H x 94D	
Weight	17.5 lbs.	
Material	6061 Machined Bezel – 5052 Aluminum Frame	
Color	FED-STD-595 Black	
Mounting	Panel or Rack	
Enclosure	IP65 Full	
Controls	Front Panel OSD	Power / LED Indicators / Brightness / Display OSD

## Options

Colors	Custom – Requires Specification
Touchscreen	Resistive or P-Cap Available